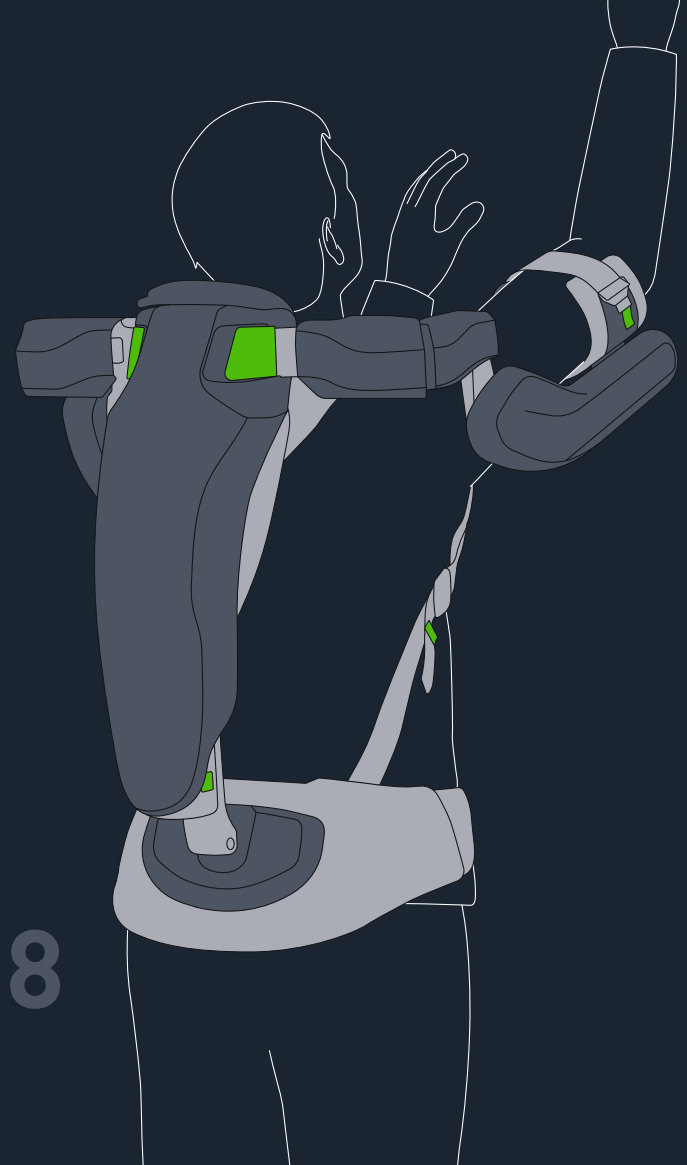


FESTOOL



ExoActive EXO 18

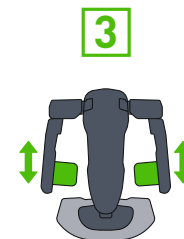
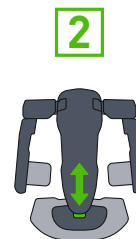
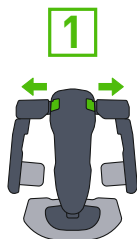
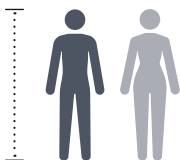
Quick Start Guide

Overview



- P. 02** Find your size
- P. 03–04** Adjust your size
- P. 04** Attach battery pack
- P. 05–07** Put on
- P. 08** Check fit
- P. 09** Switch on
- P. 09** Support area
- P. 10** Control
- P. 11** Pack after use

Find your size*



160-165 cm | 64-65"
 166-170 cm | 66-67"
 171-175 cm | 68-69"
 176-180 cm | 70-71"
 181-185 cm | 72-73"
 186-190 cm | 74-75"
 >190 cm | >75"

1	0
1	0
2	1
2	2
3	3
4	3
5	4

3	1
4	2
5	3
6	4
7	5
8	6
>8	>6

2	1
2	2
3	2
3	3
4	4
4	4
5	5



160-165 cm | 64-65"
 166-170 cm | 66-67"
 171-175 cm | 68-69"
 176-180 cm | 70-71"
 181-185 cm | 72-73"
 186-190 cm | 74-75"
 >190 cm | >75"

2	0
2	1
3	2
4	3
5	3
6	4
6	4

3	1
4	2
5	3
6	4
7	5
8	6
>8	>6

2	1
2	2
3	2
4	3
4	4
5	4
5	5



160-165 cm | 64-65"
 166-170 cm | 66-67"
 171-175 cm | 68-69"
 176-180 cm | 70-71"
 181-185 cm | 72-73"
 186-190 cm | 74-75"
 >190 cm | >75"

2	1
3	2
4	2
5	3
6	4
7	4
7	5

3	1
4	2
5	3
6	4
7	5
8	6
>8	>6

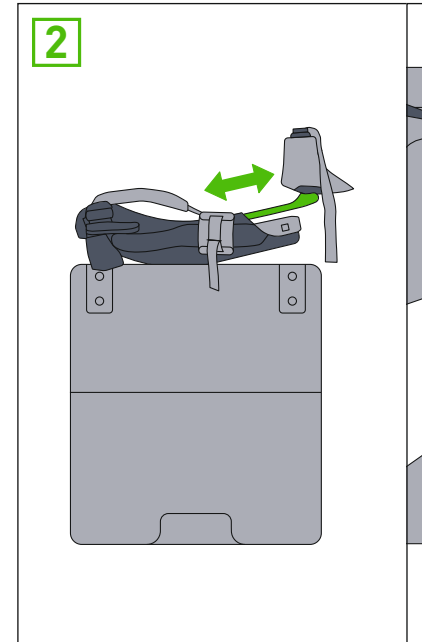
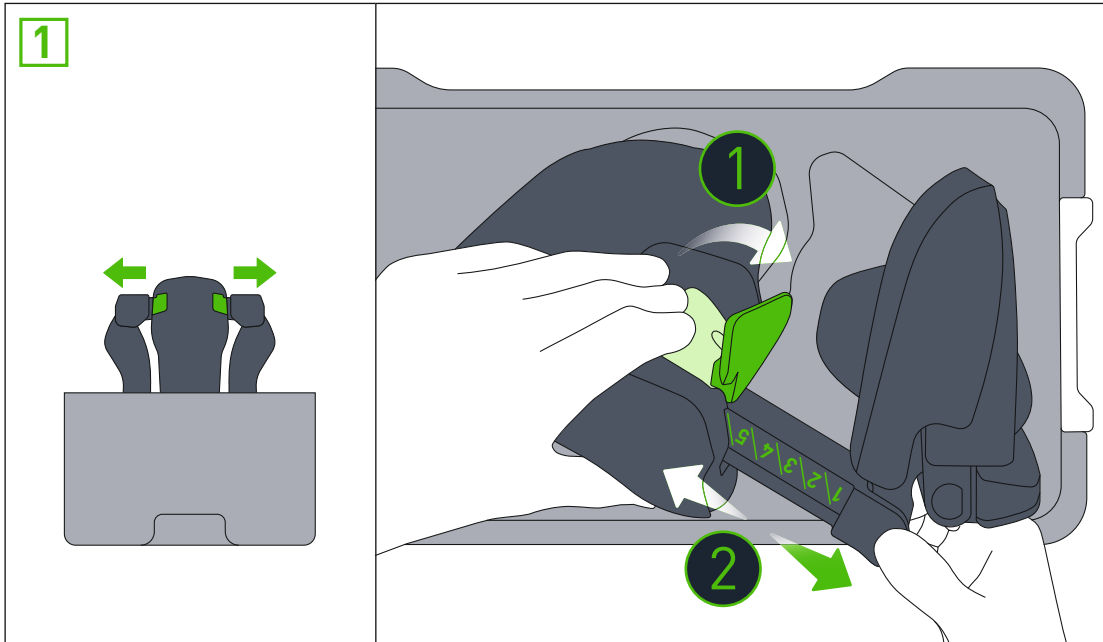
2	1
2	2
3	2
4	3
4	4
5	4
5	5

* The values are a recommendation, if they do not fit, please use individual settings.

Adjust your size

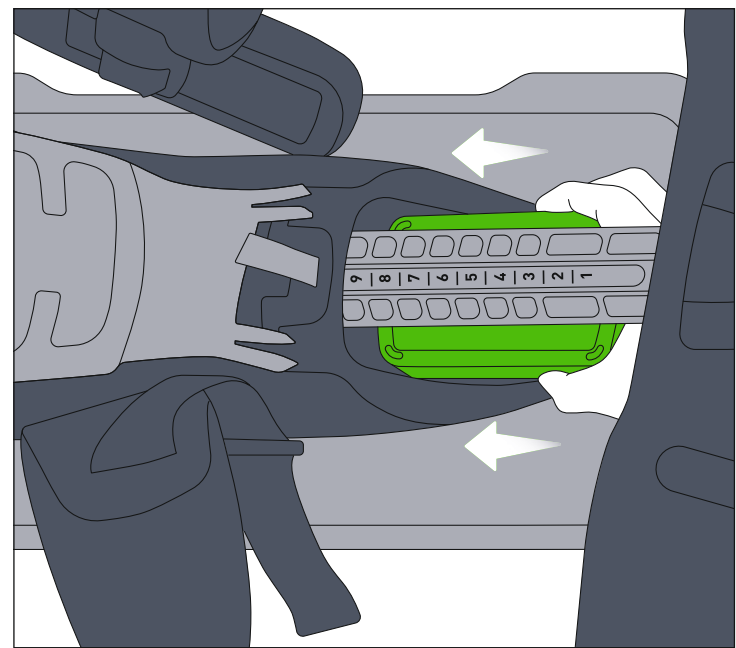
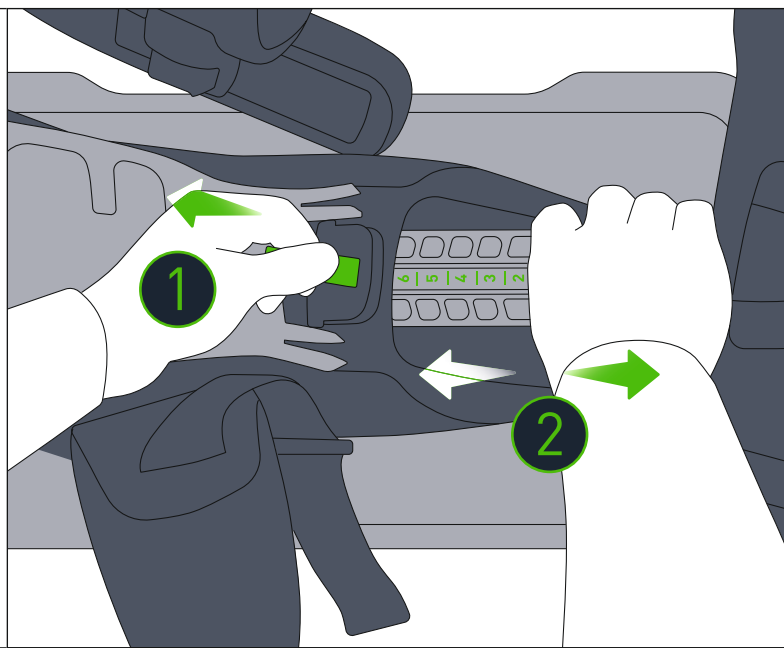
Shoulder width

Back length



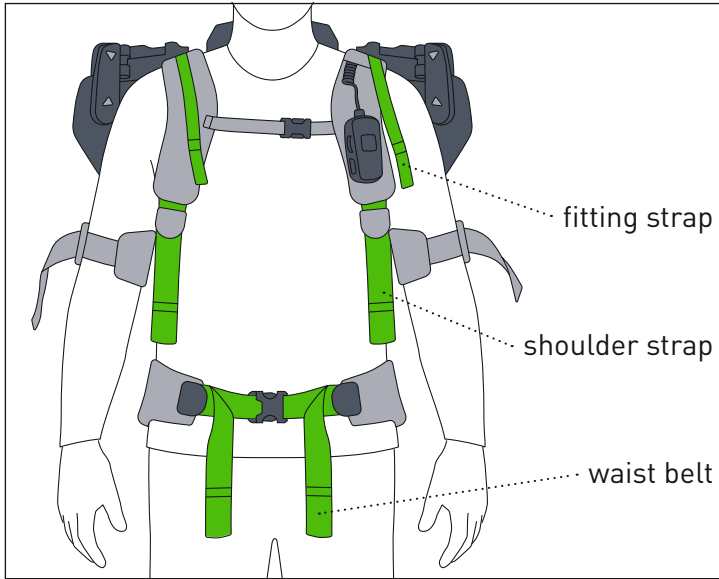
Attach battery pack

04

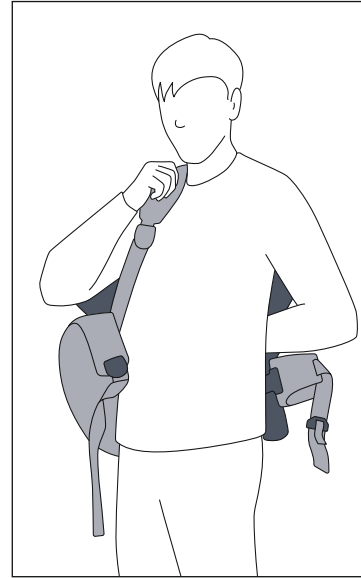


Put on

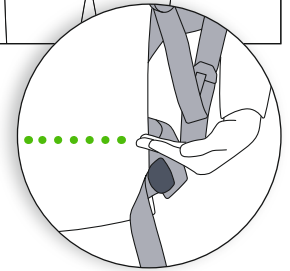
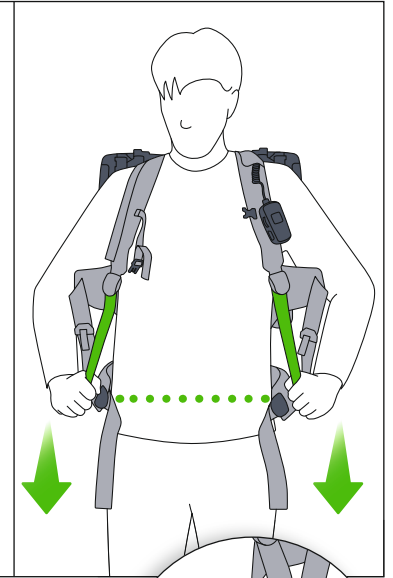
05



Suit up



Bring waist belt level and into position

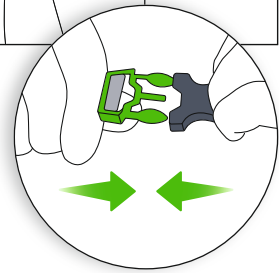
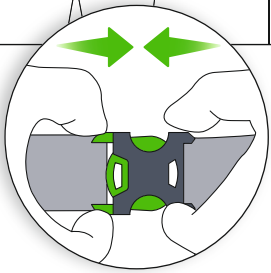
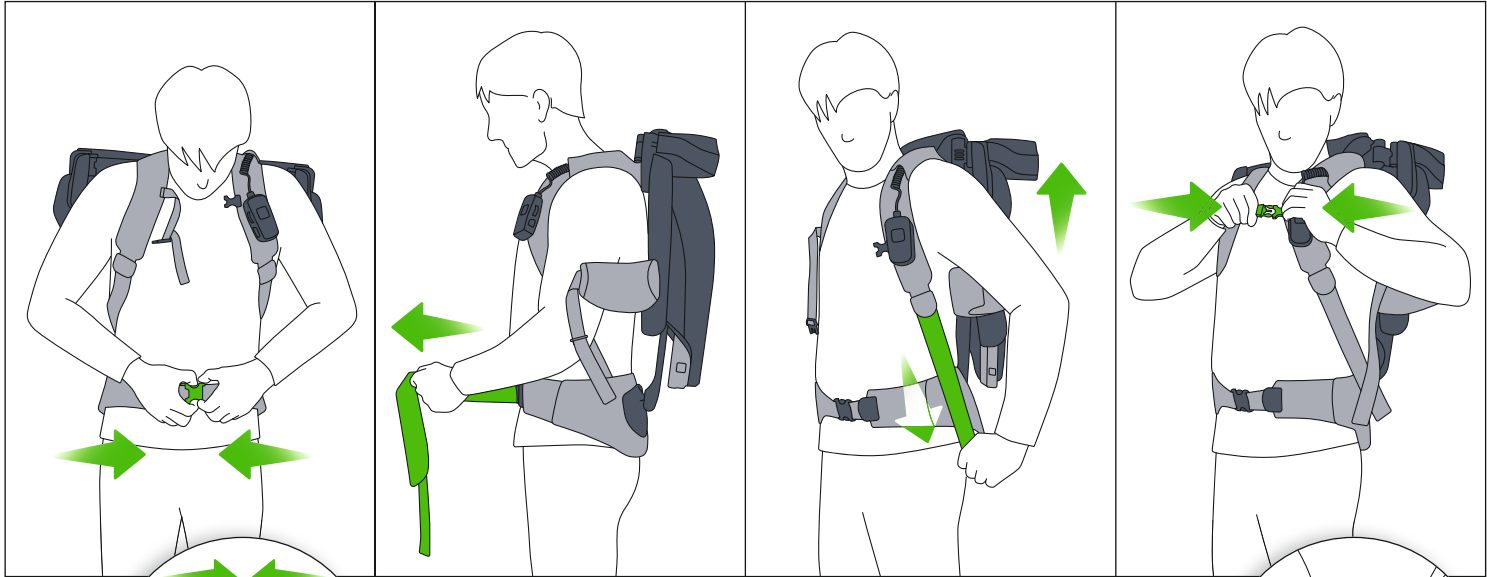


Fasten waist belt

Pull waist belt; tight

Tighten straps; loosely

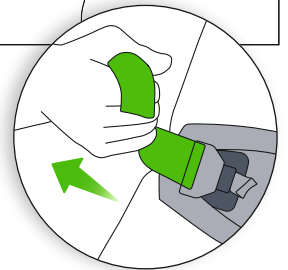
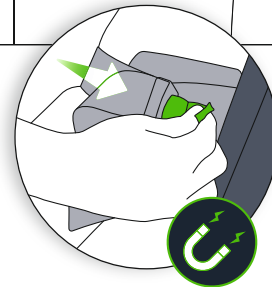
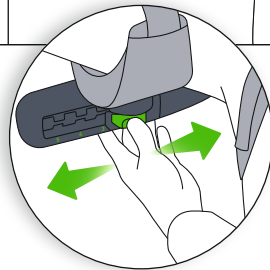
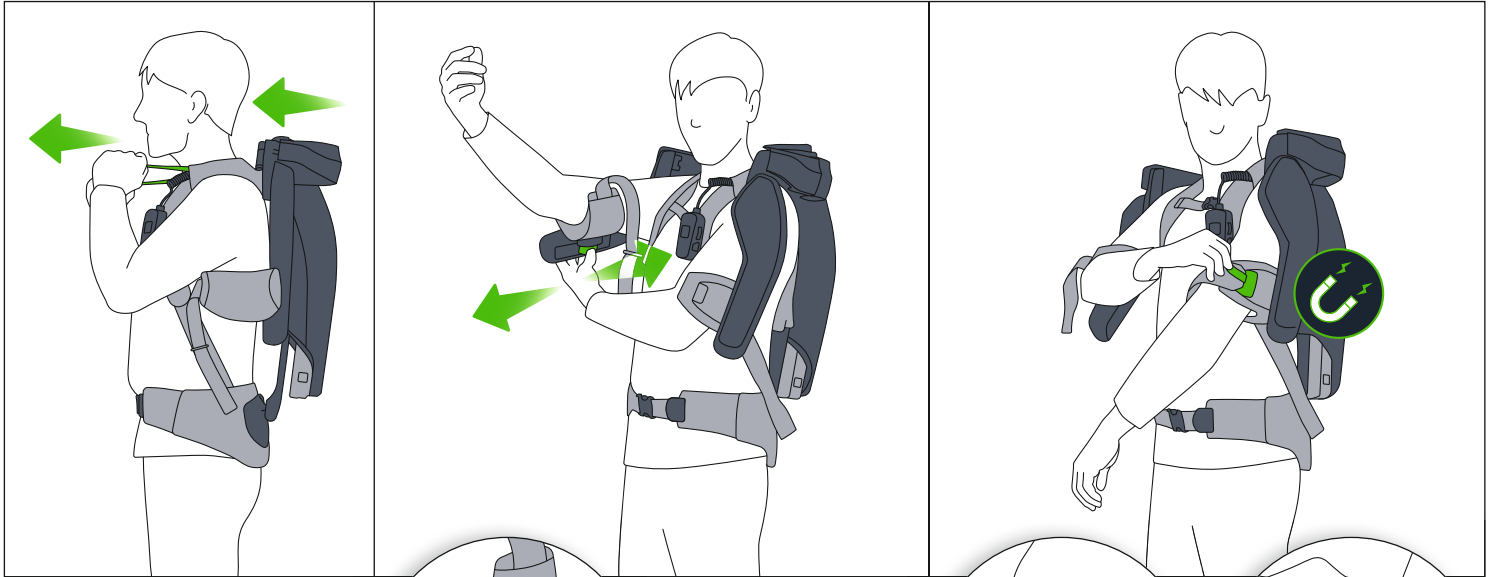
Fasten chest strap



Pull fitting straps

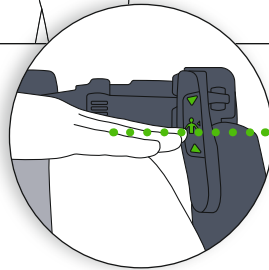
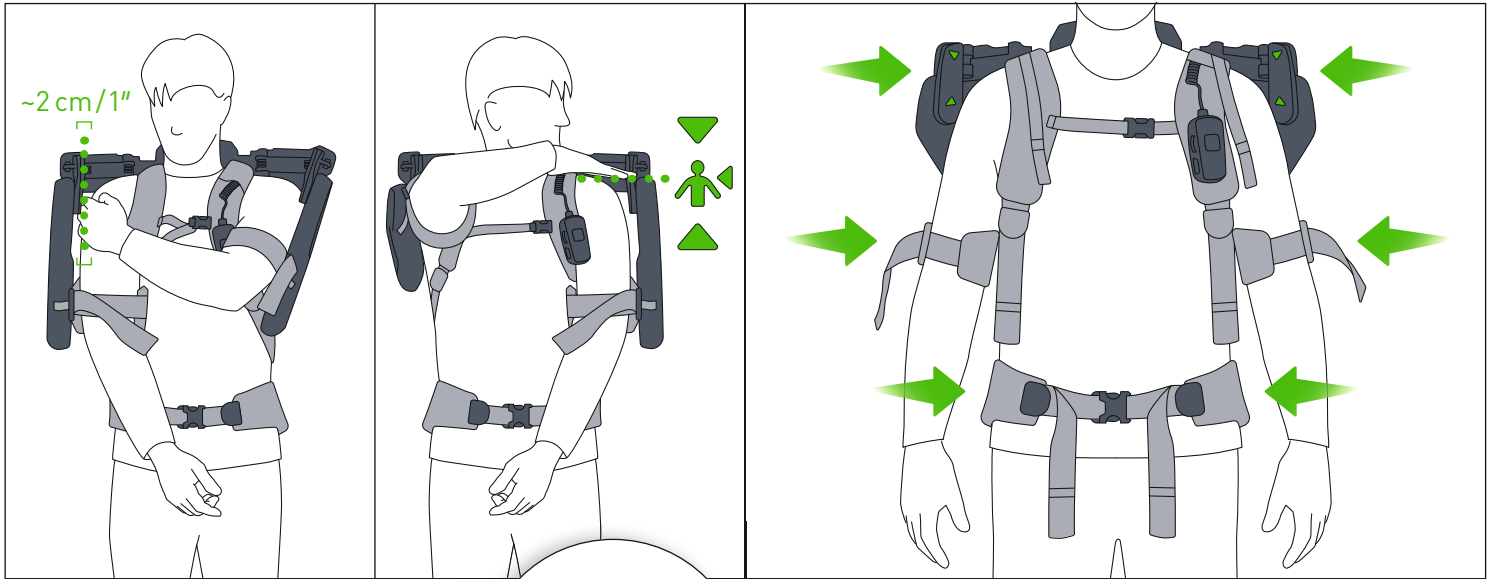
Adjust arm holders **3**

Close magnetic lock



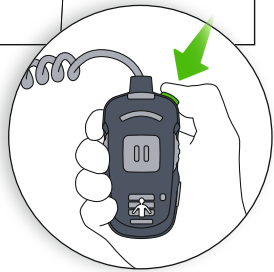
Check fit

Distance ~2 cm/1" to arm Shoulder is level to mark Check: shoulder height & clearance, freedom of movement

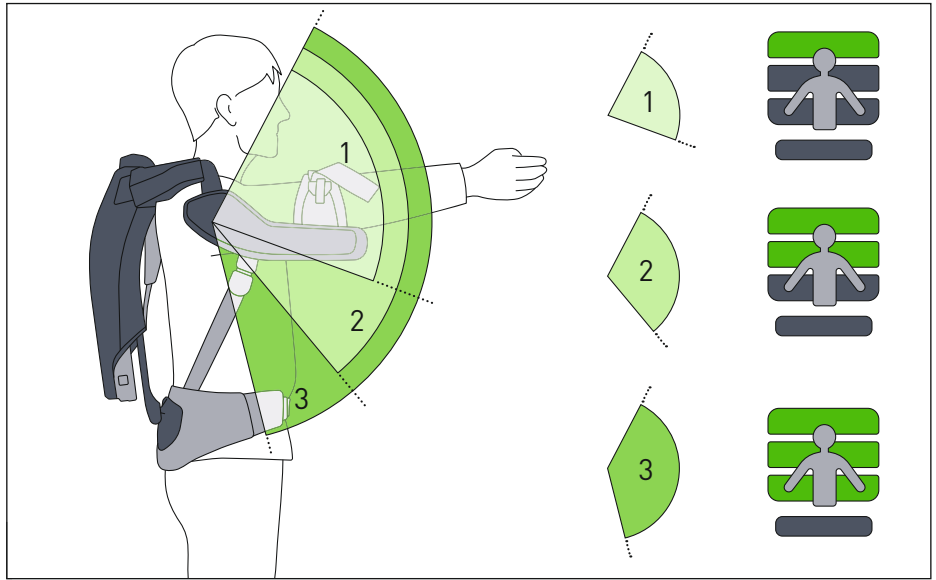


Switch on

Press ON/OFF ~1 sec



Support area



Control

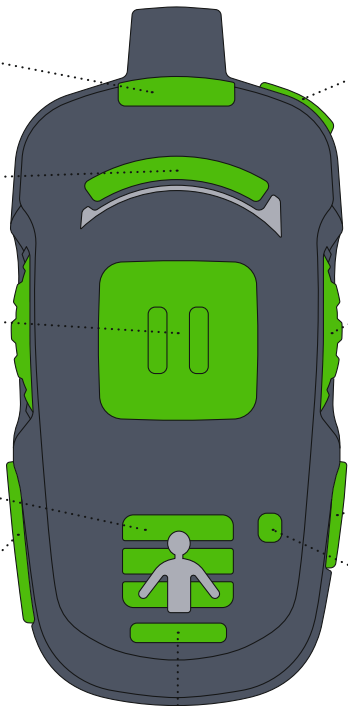
Operational & battery status

Status power level

Pause/operation

Support area 3/2/1

Change supporting area



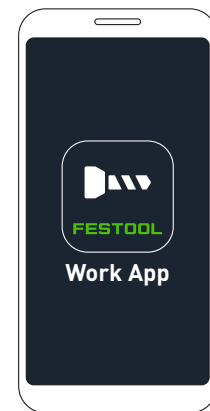
ON/OFF – Press ~1 sec

Power dial

Pairing mode

Bluetooth status

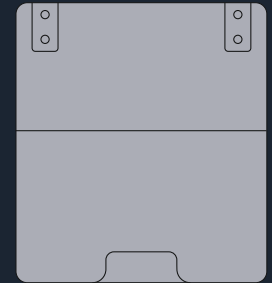
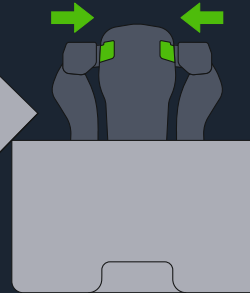
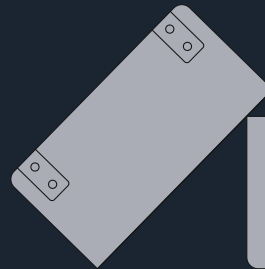
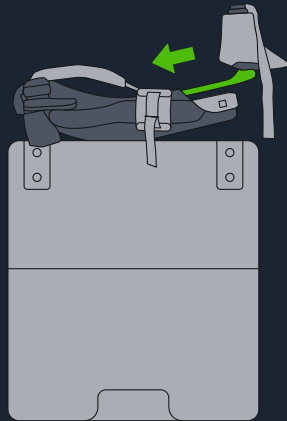
App controlled settings



Apple and the Apple Logo are trademarks of Apple Inc.
Google Play and the Google Play Logo are trademarks of Google LLC.

Pack after use

OFF - Press ~1 sec



Register your tool
**FOR 3 YEARS OF
FREE WARRANTY**
www.festool.com/service



Festool GmbH

Wertstraße 20
73240 Wendlingen
Germany

Phone +49 (0)70 24/804-0
Email info@festool.com
www.festool.com



Festool is dedicated to taking care of forests for future generations. The following materials are FSC[™]-certified: paper.